



Precision ENT Products



Tecfen Medical's ENT range features products from some of the industry's most recognizable brands that further enhance our ability to bring the quality and service that our customers have come to expect.

Tecfen Medical, an EN ISO 13485:2012 and ISO 9001:2008 certified company, strives to provide high quality medical disposable products to doctors, clinics and hospitals worldwide and is committed to building long lasting business relationships by ensuring customer satisfaction from beginning to end.

Tecfen Medical
5385 Hollister Avenue
Santa Barbara, CA 93111 U.S.A.

T: +1 805 967 1153
F: +1 805 967 1295
tecfen@tecfen.com
www.tecfenmedical.com

Rev 11 .2015

2015 ENT Products Catalog

OTOLOGICAL VENTILATION TUBES

Otological Ventilation Tubes4-5

MYRINGOTOMY BLADES & HANDLE

Juvenile Blades..... 6

Flat Stock Handle 6

ENT SURGERY DRAPES.....7

SILICONE EAR PLUGS

Silicone Ear Plugs 8

EAVEY E3 EAR WRAP

Ear Wraps..... 9

HEAD BANDS

Physician's Choice Head Bands..... 10

NASAL SPONGES

Epistaxis, Nasal and Sinus Packing 11

Doyle Patient Friendly™ Nasal Packing..... 12

SILICONE SHEETING..... 13

EPISTAX™ BALLOON CATHETER

Epistax™ Catheter with Integral Airway 14

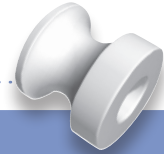
BI-VALVE NASAL SPLINTS

Bi-valve Silicone Nasal Septal Splint..... 15

Otological Ventilation Tubes: Sterile & Bulk

Popular design options for easy insertion and adequate ventilation

SHEPARD Ventilation Tubes



PRODUCT NO.	SIZE	DESCRIPTION
TE-7007-CE	1.0mm I.D.	Fluoroplastic, with wire
TE-7008-CE	1.0mm I.D.	Fluoroplastic, without wire
TE-7011-CE	1.14mm I.D.	Fluoroplastic, with wire
TE-7014-CE	1.14mm I.D.	Fluoroplastic, without wire

Classic, popular grommet design for easy insertion, adequate ventilation and short term duration.

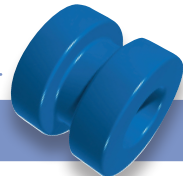
SHAH Ventilation Tubes



PRODUCT NO.	SIZE	DESCRIPTION
TE-7016-CE	1.1mm I.D.	Polyethylene, with tab
TE-7017-CE	1.14mm I.D.	Fluoroplastic, with tab
TE-7018-CE	1.14mm I.D.	Fluoroplastic, with wire

Similar to SHEPARD design with extended tab or wire on outer flange to facilitate insertion. Addition of "Shoehorn" elongated tongue on inner flange allows smaller incision and easier insertion and helps prevent early extrusion.

DONALDSON Ventilation Tubes



PRODUCT NO.	SIZE	DESCRIPTION
TE-7024-CE	1.1mm I.D.	Silicone, with tab
TE-7025-CE	1.14mm I.D.	Silicone, without tab

Popular ventilation tube due to its straightforward design which resists extrusion. Silicone material offers elasticity for easy insertion.

BEVEL BOBBIN Ventilation Tubes



PRODUCT NO.	SIZE	DESCRIPTION
TE-7029-CE	1.14mm I.D.	Fluoroplastic, without wire

Combining the best features of the Baxter Bevel Button and the Reuter Bobbin, the beveled shape resists occlusion and clears easily.

NOTE: All tubes available in NON-STERILE, bulk packaged at reduced prices

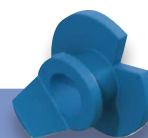
Otological Ventilation Tubes: Sterile & Bulk

Popular design options for easy insertion and adequate ventilation

PAPARELLA Ventilation Tubes



PRODUCT NO.	SIZE	DESCRIPTION
TE-7026-CE	1.14mm I.D.	Silicone, Type I, with Integral Tab



PRODUCT NO.	SIZE	DESCRIPTION
TE-7076-CE	1.42mm I.D.	Silicone, Type II, with Integral Tab

Unique design of notched inner flange facilitates insertion through simple “twist-in” movement. Very stable for long-term implantation. Integral tab for removal with forceps. Type II is a long-term design similar to the short-term Type I. It has large inner flange allowing easy placement and 1.42mm inner diameter to help prevent blockage

ARMSTRONG Ventilation Tubes



PRODUCT NO.	SIZE	DESCRIPTION
TE-7056-CE	1.1mm I.D.	Polyethylene, Grommet type with Short Shaft

Beveled inner flange is angled to fit the tympanic membrane and resist premature extrusion. For long-term ventilation.

T – TUBE Ventilation Tubes



PRODUCT NO.	SIZE	DESCRIPTION
TE-7089-CE	1.14mm I.D.	Silicone, Pre-trimmed, 8mm Length, 2mm Flanges
TE-7091-CE	1.14mm I.D.	Silicone, Pre-trimmed, 12mm Length, 4mm Flanges

The T-flange and long shaft design keep the tube firmly positioned giving the surgeon complete control over length of ventilation time. The silicone material allows soft flanges to collapse easily for introduction through a very small incision and safe and comfort-able removal at any time. Can be easily trimmed to adapt to the surgeon’s needs.

NOTE: All tubes available in NON-STERILE, bulk packaged at reduced prices

Myringotomy Blades

Juvenile Blades



PRODUCT NO.	DESCRIPTION	QTY PER BOX
QKN7121	Lance Blade	6

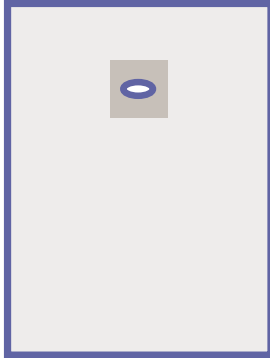


PRODUCT NO.	DESCRIPTION	QTY PER BOX
QKN7120	Spear Blade	6

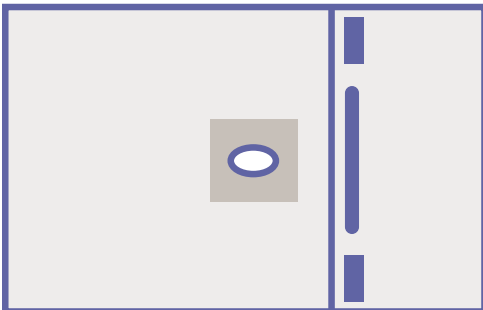
Flat Stock Handle

PRODUCT NO.	DESCRIPTION	QTY PER BOX
QKN1310	10cm Handle	1

ENT Surgery Drapes



PRODUCT NO	DESCRIPTION	SIZE	APERTURE	ADHESIVE	QTY PER BOX
D1030	Aperture Drape	83cm X 129cm	7cm X 5cm	12cm X 11cm	10



PRODUCT NO	DESCRIPTION	SIZE	APERTURE	ADHESIVE	QTY PER BOX
D1024A	Aperture Drape with Pouch	48cm X 38cm	5cm X 4cm	12cm X 11cm	10

Silicone Ear Plugs

Seals Ear Against Water and Noise



Designed to help protect the user's ears against damaging noise levels, prevent or eliminate water retention in the ear canal, and remove excess ear-wax buildup.

MADE IN THE U.S.A

- Easy to use
- Effective
- Soft
- Reusable
- Comfortable

Ear Plugs (Bulk)

PRODUCT NO.	QTY PER CASE	CASES PER BAG
Q30002	2 plugs/case	100 cases/bag



Ear Plugs (Boxed Display)

PRODUCT NO.	QTY PER CASE	CASES PER box
Q30024	2 plugs/case	24 cases/box, shrink wrapped

- Pliable and moldable
- Silicone, a polymer that is hypoallergenic and water repellent
- Easily inserted and removed with no residue or "clean-up"
- Packed and stored in plastic storage containers for reuse
- Two plugs per plastic container



Eavey E3 Ear Wrap

Developed in conjunction with Roland D. Eavey, M.D.

Surgical External Post-Operative Dressing

PRODUCT NO.	DESCRIPTION	QTY PER BAG
41400	Single Ear	6/Bag



SURGEON FEATURES

- Time and money savings
- Adjustable
- One size fits all
- Use on either ear
- Change quick and easily
- Easily repositioned
- Easily replaced
- Used in combination with familiar cotton and gauze absorbent materials

PATIENT FEATURES

- Extremely comfortable
- Safe sleeping
- Easily repositioned
- Easily replaced at home following surgical instructions

INSTRUCTIONS

In the operating room, apply the conventional absorbent material such as cotton and gauze to the operated ear. Place the widest part over the operated ear and absorbent materials. Wrap the band around the head and use the velcro to secure. The wrap is placed at the same level one would have placed a conventional dressing.

Physician's Choice Head Bands

Available in a variety of colors and sizes

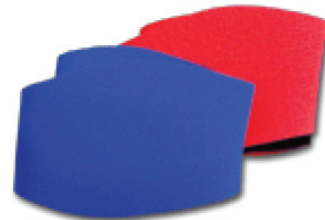
Physician's Choice Head Bands

PRODUCT NO.	DESCRIPTION	QTY PER BAG
41206	SMALL Ages 18 months – 4 years	6/Bag
41207	MEDIUM Ages 5 – 10 years	6/Bag
41208	LARGE Ages 11 – Adult	6/Bag
41209	X-LARGE	6/Bag



FEATURES

- Velcro closure allows easy adjustments
- Comfortable fit
- Fabricated from wet-suit neoprene material
- Reversible – dual colored.
- Happily worn by boys and girls



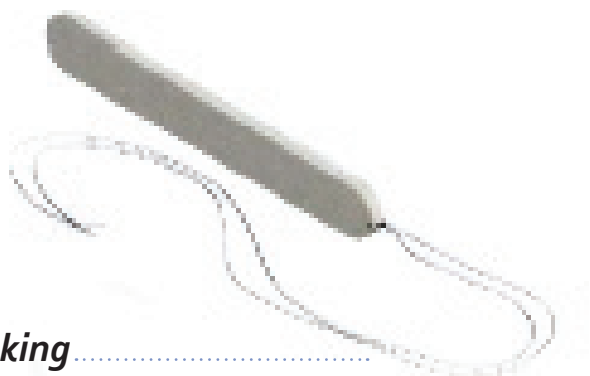
The majority of Otolaryngologists and Hearing Health Care Professionals in the U.S. believe that patients who wear ear protection, especially custom-molded protectors or preformed rubber ear plugs, should also wear a tight-fitting cap or band for extra protection when swimming or showering. Use of the PHYSICIANS' CHOICE Headband is an effective, stylish, and comfortable way of keeping water out of the ears and ear protectors in place.

Nasal Sponges

We offer the most popular designs for nasal and sinus packing including Doyle Patient-Friendly Anatomic Nasal Packs and AbsorbENT™ Nasal and Sinus Packs. Our packing consist of three-dimensional, interconnected open cells that are extremely soft and pliable. This interconnected structure produces packing that is exceptionally strong, highly absorbent and virtually lint and fiber free.

Soft, Absorbent, Lint and Fiber Free! AbsorbENT™ Nasal and Sinus Packs Feature:

- Rounded edges for patient comfort during removal
- Even expansion for desired gentle mucosal pressure
- Rapid wicking of blood and fluid
- Individually sterile packaged



AbsorbENT™ Epistaxis, Nasal and Sinus Packing

PRODUCT NO.	DESCRIPTION	PACKS PER BOX
RH-2310-10	Epistaxis Pack with String, Large 10.0cm long x 1.5cm wide x 2.5cm thick	10
RH-2315-20	Epistaxis Pack with String, Small 5.5cm long x 1.5cm wide x 2.5cm thick	20

PRODUCT NO.	DESCRIPTION	PACKS PER BOX
RH-7401-10	Nasal Packing 4.5cm long x 1.5cm wide x 2.0cm high	10
RH-7404-10	Nasal Packing 8.0cm long x 1.5cm wide x 2.0cm high	10
RH-7405-10	Nasal Packing with Airway and String 8.0cm long x 1.5cm wide x 2.0cm thick	10
RH-7408-10	Nasal Packing with Airway and String 4.5cm long x 1.5cm wide x 2.0cm thick	10
RH-7409-10	Nasal Packing, Anatomical with String 8.0cm long x 1.5cm wide x 3.0cm thick	10
RH-7410-10	Nasal Packing, Anatomical with Airway and String 8.0cm long x 1.5cm wide x 3.0cm thick	10
RH-7406-10	Nasal Packing, Thin 8.0cm long x 1.0cm wide x 2.0cm thick	10
RH-7411-10	Nasal Packing, Thin Anatomical 8.0cm long x 1.0cm wide x 3.0cm thick	10

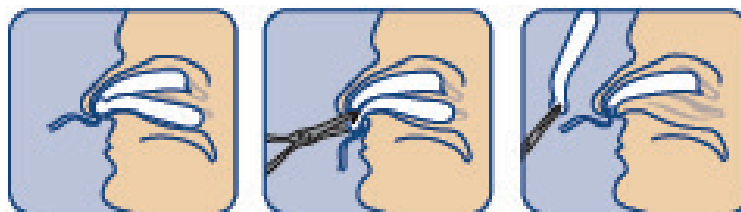
PRODUCT NO.	DESCRIPTION	PACKS PER BOX
RH-7530-10	Sinus Packing with String 3.5cm long x 0.6cm wide x 1.2cm thick	10*
RH-7532-10	Sinus Packing with String 3.5cm long x 0.9cm wide x 1.2cm thick	10*

*10 packs of 2 each per box

Nasal Sponges

Doyle Patient-Friendly Nasal Packs are sterile, anatomically shaped, compressed AbsorbENT™ Sponges. The pack is precut from back to front except for a web at the distal end. The pack is inserted and functions like a standard anatomical nasal pack. On removal, the pack is pulled slightly out of the nasal cavity to expose the uncut web. The web is then cut through with scissors, which separates the pack into two parts. The two parts are removed one at a time, greatly reducing patient discomfort.

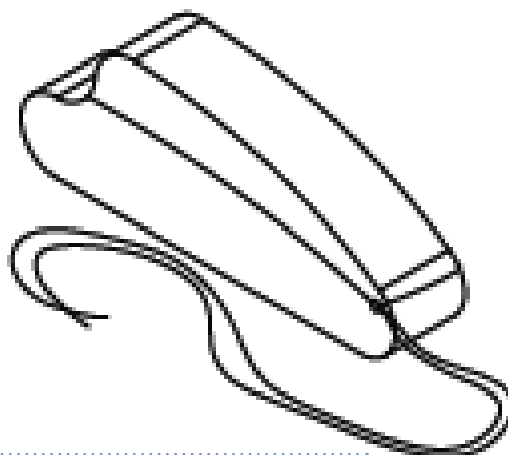
*Developed in cooperation with
Donald Doyle, MD, FACS



Inserted into nasal fossa.

Pull out slightly and cut through remaining web.

Remove two parts, one at a time



Doyle Patient Friendly™ Nasal Packs

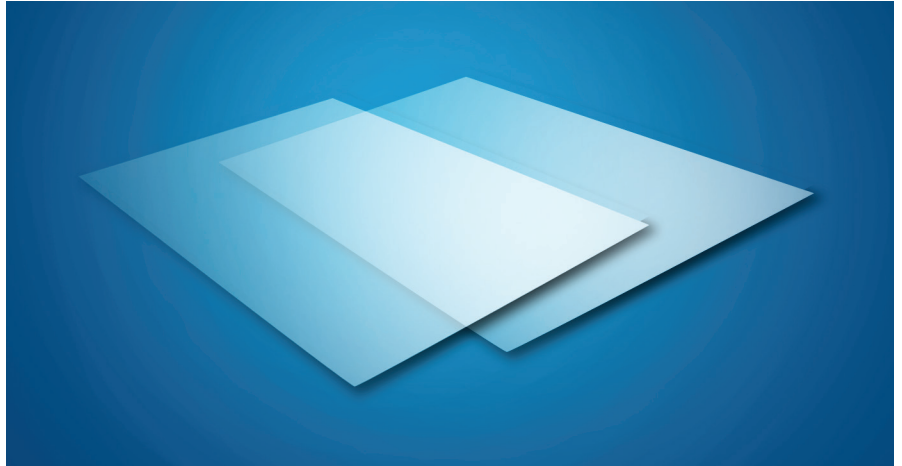
PRODUCT NO.	DESCRIPTION	PACKS PER BOX
RH-7412-10	Doyle Patient Friendly Anatomical Nasal Packing with String 8.0cm long x 1.5cm wide x 3.0cm thick	10
RH-7413-10	Doyle Patient Friendly Anatomical Nasal Packing with Airway Tube 8.0cm long x 1.5cm wide x 3.0cm thick	10
RH-7414-10	Doyle Patient Friendly Anatomical Nasal Packing with String, Thin 8.0cm long x 1.0cm wide x 3.0cm thick	10

Silicone Sheeting

Custom-cut, designed to be trimmed by the surgeon

Custom-cut, medical grade silicone sheeting Features:

- Two optional thicknesses – 1mm and .05mm
- Individually sterile packaged



Silicone Sheeting

PRODUCT NO.	DESCRIPTION	PACKS PER BOX
SP-65000	Silicone Sheeting, 1mm x 56mm x 76mm	1 per package/10 per box
SP-65100	Silicone Sheeting, 0.5mm x 56mm x 76mm	1 per package/10 per box

Epistax™ Balloon Catheter

Two balloon catheter controls intranasal bleeding

Custom-cut, medical grade silicone sheeting Features:

- Two optional thicknesses – 1mm and .05mm
- Individually sterile packaged

Epistax™ Balloon Catheter

PRODUCT NO.	DESCRIPTION	DIMENSIONS	UNITS PER BOX
RH-4200-01	EpiStax™ Balloon Catheter	97mm	1
RH-4220-01	EpiStax™ Balloon Catheter with Inflation Syringe	97mm	1
RH-4400-01	EpiStax™ Balloon Catheter	120mm	1
RH-4420-01	EpiStax™ Balloon Catheter with Inflation Syringe	120mm	1



Un-inflated



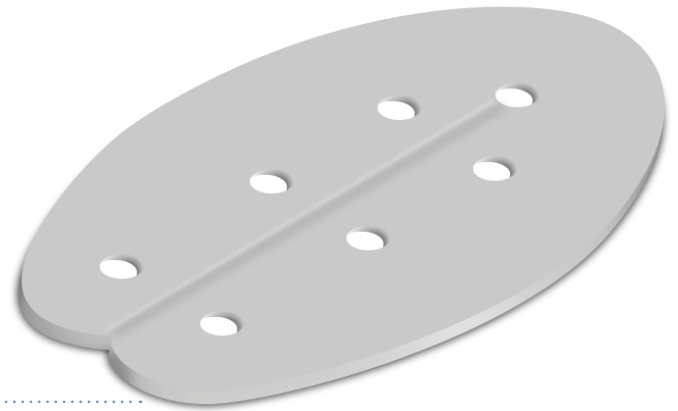
Inflated

Bi-Valve Nasal Splints

Available in two sizes, ready to use

Bivalve Silicone Nasal Septal Splints are split for atraumatic insertion and removal, provided sterile and ready to use:

- 100% Fluoroplastic to reduce or prevent adhesions between the septum and lateral nasal wall
- Easy insertion and removal



Bivalve Silicone Nasal Septal Splint

PRODUCT NO.	SIZE	DESCRIPTION	THICKNESS	QTY PER BOX
SP-27000	Standard, thin	Bivalve splint, sterile	0.25mm	6 Pair
SP-27005	Standard, thick	Bivalve splint, sterile	0.50mm	6 Pair
SP-27010	Oversize, thin	Bivalve splint, sterile	0.25mm	6 Pair
SP-27015	Oversize, thick	Bivalve splint, sterile	0.50mm	6 Pair

Tecfen Medical
5385 Hollister Avenue
Santa Barbara, CA 93111 U.S.A.

T: +1 805 967 1153
F: +1 805 967 1295
tecfen@tecfen.com
www.tecfenmedical.com